

Workshop Solution

A LEAN innovative work cell to enhance productivity and profitability.



5S for Organizational Effectiveness, this shows the value of Workshop Solution



Special designed workstations for various work tasks.



Workshop Solution can also be applied to create optimized workstations for training and educational activities at training centers.

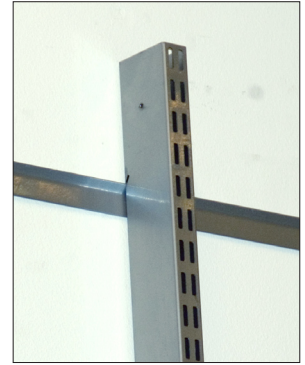
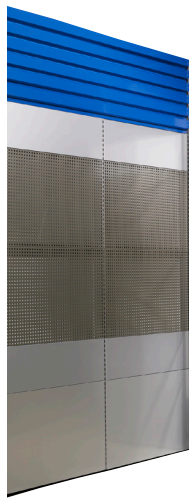
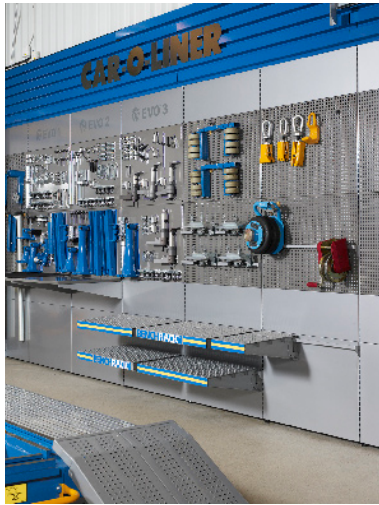
Contents

Wall sections	4
Wall separators height 3000 mm	5
Tool board silhouettes and wall kits	6
Tool wagons	7
Accessories	8
- Hooks	10

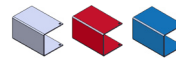


Our Workshop Solution allows your shop to configure unique work cell designs to meet your space requirement needs

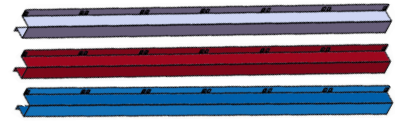
Wall sections H-3000 mm



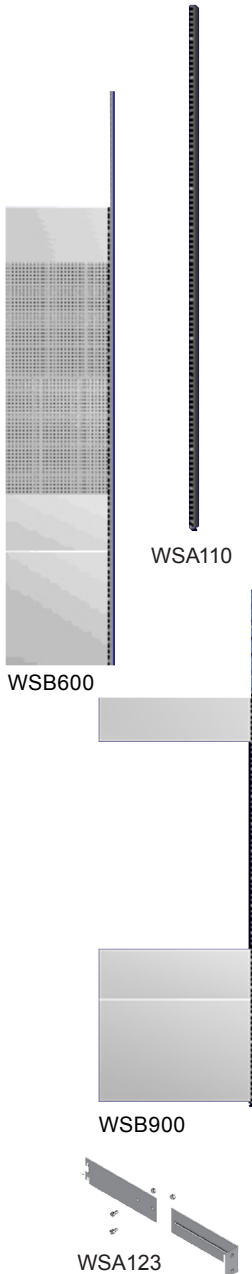
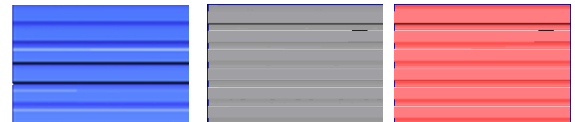
WSA121



Joint for ramp



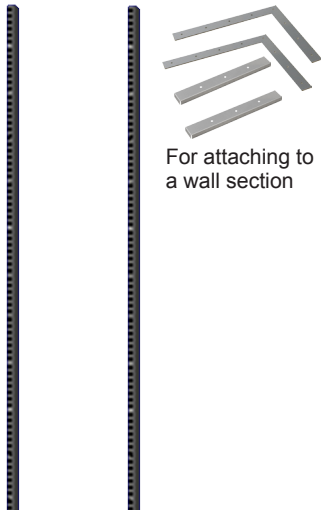
*Ramps (has to be ordered separately)



CONTENTS

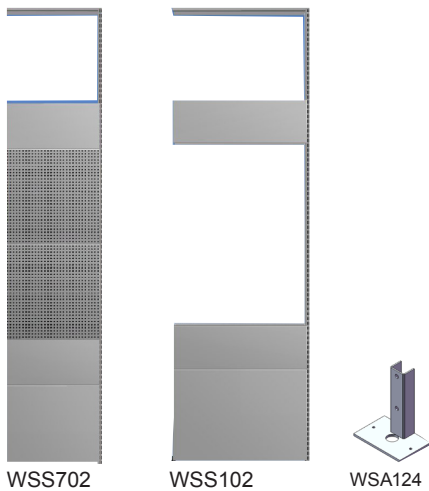
Item	POP No.	Art. No.	Pcs.
Pole H=3000	WSA110	35784	1
Wall section 600 *	WSB600	35785	1
Pole	WSA110	35784	1
Angled wall strip	WSA121	35787	1
Divider	WSA715	35789	1
Tool board 600	WSB710	35790	2
Board 600x300	WSB740	35791	2
Board 600x600	WSB741	35792	1
Wall section 900 excl. t. boards *	WSB900	35786	1
Pole h=3000	WSA110	35784	1
Divider	WSA1115	35793	1
Angled wall strip	WSA121	35787	1
Board 900x300	WSB140	35794	2
Board 900x600	WSB141	35795	1
Accessories			
Ramps	Art. No (blue)	Art. No (grey)	Art. No (red)
Ramp 600 mm	36639	36657	36653
Ramp 900 mm	36650	36658	36654
Ramp 1800 mm	36651	36659	36655
Ramp 2700 mm	36652	36660	36656
Joint for ramp	39739	39741	39740
Accessories			Pcs.
Wall bracket for pole	WSA123	35872	1
Tool board 900 x 600 mm	WSB110	35796	1

Wall separators H-3000 mm

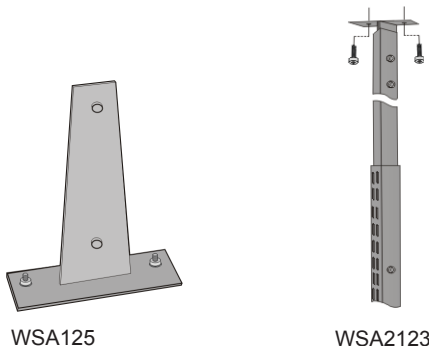


For attaching to a wall section

WSA110 WSS101



WSS702 WSS102 WSA124



WSA125 WSA2123

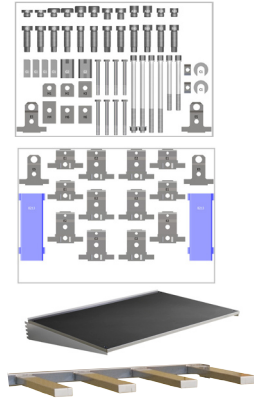
CONTENTS

Item	POP No.	Art. No.	Pcs.
Separator start pole H=3000 **	WSA110	35784	1
Separator start pole incl. angle brackets h=3000	WSS101	35805	1
Pole h=3000	WSA110	35784	1
Top bracket	WSA113	36597	2
Top plate, in angle	WSA116	36598	2
Separator add on 600	WSS702	35810	1
Pole	WSA110	35784	1
Divider	WSA715	35789	1
Tool board 600	WSB710	35790	4
Board 600x300	WSB740	35791	4
Board 600x600	WSB741	35792	2
Top bracket	WSA713	39911	1
Flat bracket	WSA115	39616	1
Foot separator pole std	WSA124	39746	1
Separator add on 900 excl. t. boards	WSS102	35808	1
Pole h=3000	WSA110	35784	1
Divider	WSA1115	35793	1
Board 900x300	WSB140	35794	4
Board 900x600	WSB141	35795	2
Top bracket	WSA113	36597	1
Flat bracket	WSA115	39616	1
Foot separator pole std.	WSA124	39746	1
Accessories	POP No.	Art. No.	Pcs.
High foot separator start/end section	WSA125	39747	1
Ceiling Bracket 2000 mm	WSA2123	35819	1
Tool board 900 x 600 mm	WSB110	35796	1

** = For freestanding wall

Tool board, silhouettes and wall kits

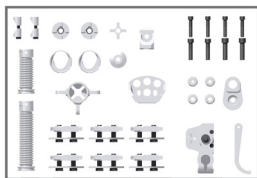
For wall sections and tool wagons



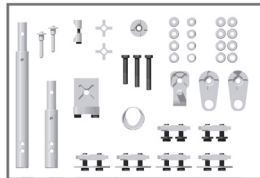
WSA92



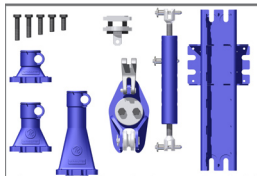
Creates a professional image for your Companies Body Shop



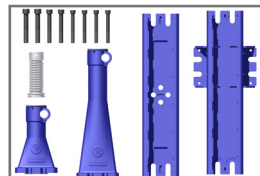
WSE211



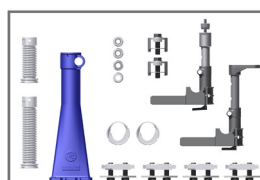
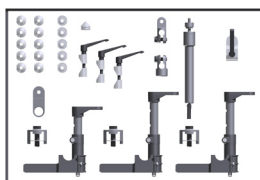
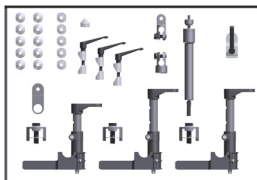
WSE214



WSE217



WSE220



WSA117

CONTENTS

Item	POP No.	Art. No.	Pcs.
Wall Set for B730 kit *	WSA92	35818	1
Bench mounting holder	WSA340	36185	1
Shelf c/c 900 x 320 compl.	WSA210	35812	1
B730 tool board set, 1+2	WSB230	36283	1
Tool holder set B730	WSH507	36186	1
Tool Board Set EVO1	WSE211	35797	1
Tool holder set EVO1	WSH501	35779	1
Tool board EVO1-1	WSE212	35798	1
Tool board EVO1-2	WSE213	35799	1
Tool Board Set EVO2	WSE214	35800	1
Tool holder set EVO2	WSH502	35780	1
Tool board EVO2-1	WSE215	35801	1
Tool board EVO2-2	WSE216	35802	1
Tool board set EVO3-1	WSE217	35803	1
Tool holder set EVO3-1	WSH503	35781	1
Tool board EVO3-1	WSE218	35804	1
Tool board 900	WSB110	35796	1
Tool Board Set EVO3	WSE220	35853	1
Tool holder set EVO3	WSH503	35781	1
Tool holder set EVO3-2	WSH505	35782	1
Tool board EVO3-1	WSE218	35804	1
Tool board EVO3-2	WSE221	35824	1
Accessories	POP No.	Art. No.	Pcs.
Wall strip U-profile 1208 mm	WSA117	35833	1

* Not for Tool wagon WSW90+

Tool wagons



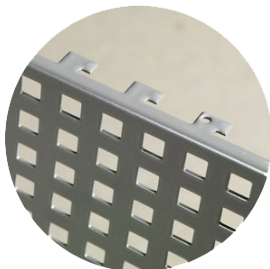
WSW90



WSW90+



WSW92



The wall panels and the shelves are easily mounted on the walls or the tool wagons and can be reconfigured as needed.



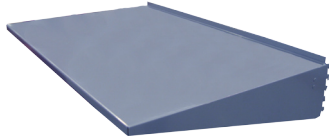
Example
WSW92+ with application of EVO

CONTENTS

Item	POP No.	Art. No.	Pcs.
Tool Wagon WSW90 compl	WSW90	35815	1
Tool holder set WSW90	WSHS90	30508	1
Tool Wagon excl. tool boards	WSW90+	35816	1
See previous page for tool board applications			1
Tool Wagon compl. for B730 kit	WSW92	35817	1
Bench mounting holder	WSA340	36185	1
Shelf c/c 900 x 320 compl.	WSA210	35812	1
B730 tool board set, 1+2	WSB230	36283	1
Tool holder set B730	WSHS507	36186	1

Accessories

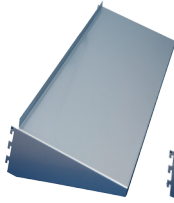
With Workshop Solution there are Universal workbench and shelf applications that are easily configurable to your shops needs.



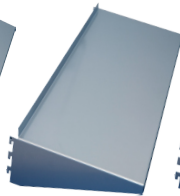
WSA901



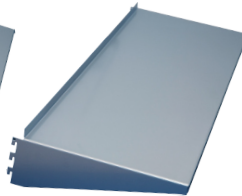
WSA902



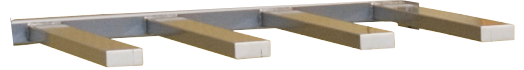
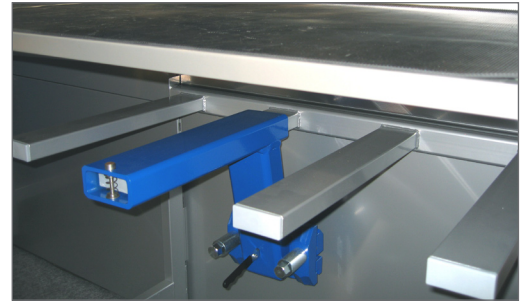
WSA210



WSA211



WSA212



WSA340

Work Space Solutions allows you to store and hang various accessories and tools.



WSA711 - 600 mm
WSA311 - 900 mm



WSA710 - 600 mm
WSA310 - 900 mm



WSA350



Storage mounting bracket bars to keep your Power Supply Unit out of the way and off the floor.



WSA117

CONTENTS

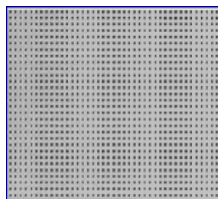
Item	POP No.	Art. No.	Pcs.
Work Shelf c/c 900	WSA901	39742	1
Rubber protection with glue	WSA902	39743	1
Shelf c/c 900 x 320 compl.	WSA210	35812	1
Shelf c/c 900 x 500 compl.	WSA211	39744	1
Shelf c/c 900 x 600 compl.	WSA212	39745	1
Bar 600	WSA710	35813	1
Tool Bar 30x20x600mm	WSA711	36849	1
Bar 900	WSA310	35814	1
Tool Bar 30x20x900mm	WSA311	36893	1
Bar 900 BenchRack ramps	WSA350	36188	1
Tool Board 600	WSB710	35790	1
Tool board 900	WSB110	35796	1
Tool holder set tool board	WSHS201	30510	1
Wall strip U-profile 1208mm	WSA117	35833	1
Holder bench mounting	WSA340	36185	1
Car-O-Liner sign L=2100 H=250 mm Stainless Steel incl.inst.set	WSACOL	35820	1
Wall bracket for pole	WSA123	35872	1
Foot separator pole std.	WSA124	39746	1
High foot separator start/end section	WSA125	39747	1
Ceiling Bracket 2000mm	WSA2123	35819	1

Accessories

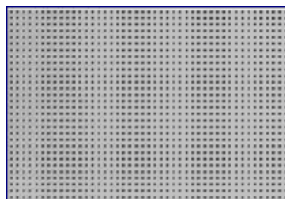


Quick inventory control

The silhouetted tool storage boards helps your Team stay organized while creating a "LEAN" efficient profitable environment.



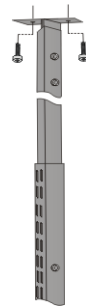
WSB710



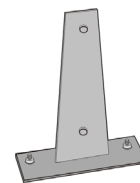
WSB110

CAR-O-LINER

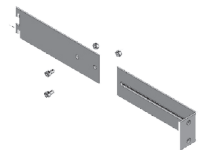
WSACOL



WSA2123



WSA125



WSA123

CONTENTS

Item	POP No.	Art. No.	Pcs.
Tool Board 600	WSB710	35790	1
Tool board 900	WSB110	35796	1
Tool holder set tool board	WSHS201	30510	1
Car-O-Liner sign L=2100 H=250 mm Stainless Steel incl.inst.set	WSACOL	35820	1
Wall bracket for pole	WSA123	35872	1
High foot separator start/end section	WSA125	39747	1
Ceiling Bracket 2000mm	WSA2123	35819	1

Accessories



CONTENTS

Item	POP No.	Art. No.	Pcs.
Tool holder	WSH00	30468	1
Plastic hook 30 MM	WSH30P	30481	1
Tool holder	WSH30	30469	1
Tool holder 50 mm	WSH50	36823	1
Tool holder 80 mm	WSH80	36824	1
Tool holder 110 mm	WSH110	30504	1
Tool holder 130 mm	WSH130	30495	1
Steel hook 230 mm	WSH08	30502	1
Tool holder 26 mm	WSH26	36827	1
Clipholder, small Ø 15	WSH15	30482	1
Tool holder Ø 25	WSH25	30470	1
Tool holder Ø 30	WSH009	36187	1
Tool holder 39 mm	WSH39	36825	1
Shell holder	WSH14	30483	1
Ring, Round 75mm	WSH75	30485	1
Can, round	WSH70	30484	1
Can, oval	WSH22	30486	1
Box 90x86x55	WSH90	30497	1
Box 145X86X70	WSH145	36826	1
Box 205x170x115	WSH205	30501	1
Tool holder set tool board	WSHS201	30510	1
Tool holder set tool wagon	WSHS203	30491	1
Tool holder set EVO1	WSH501	35779	1
Tool holder set EVO2	WSH502	35780	1
Tool holder set EVO3-1	WSH503	35781	1
Tool holder set EVO3-2	WSH505	35782	1
Tool holder set	WSW90	30508	1
Tool holder set WSW92	WSHS507	36186	1
Tool holder set COM	WSH509	36380	1



Car-O-Liner is a Leading Global Provider of Assured and Profitable Alignment Processes to the Automotive Industry, including Technical Development, Training and Service. Over 40 000 Car-O-Liner Collision Repair Systems are in use worldwide. Car-O-Liner runs operations of its own in Scandinavia, USA, UK, France, Germany, Thailand, India and China and sells through local distributors in more than 70 countries.

Car-O-Liner products are well known for their high quality, advanced technology and ergonomic design.

Car-O-Liner and Josam are both part of the Alignment Systems Group. Car-O-Liner is focused on servicing the car and light truck industry while Josam is focused on heavy duty vehicles.



Box 7 • SE-736 21 Kungsör • Sweden. Telephone +46 227 412 00 • Telefax +46 227 319 00
www.car-o-liner.com • info@car-o-liner.se